

# PROBLEM

*Solver*<sup>®</sup>  
**BULLETIN**

## Alignment Adjustability Restrictions

[www.moogproblemsolver.com](http://www.moogproblemsolver.com)

**Nissan Trucks/SUVs**

### PROBLEM:

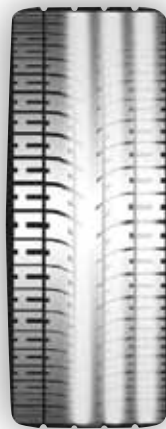
#### No OE provision for front wheel alignment

Full and mid-size Nissan trucks and SUVs come with non-adjustable control arm bolts from the factory. If these vehicles require an alignment, then adjustable “cam bolts” must be installed in the lower control arm.

Camber that is out of specification will cause the vehicle to pull left or right and will create wear on the inside or outside edge of the tire.



**Inner/Outer  
Edge Wear**



**Camber/Toe  
Wear**

Description	Years	Make/Model	Part Number
Cam Bolts	2005-2010	Nissan Titan, Armada, Pathfinder, Xterra, Frontier	K80276

### SOLUTION:

#### MOOG® K80276 Cam Bolts

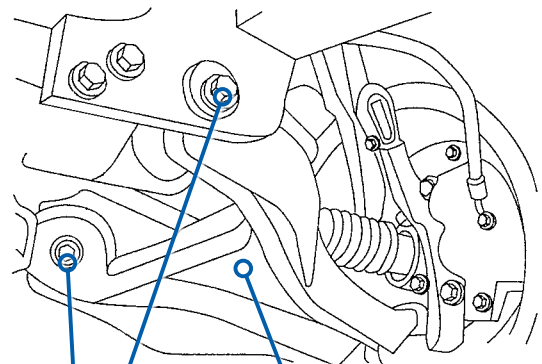


MOOG K80276 cam bolts easily install in place of the factory lower control arm mounting bolts and allow for 4 degrees of caster/camber adjustment (-2° to +2°).



**MOOG  
K80276**

#### FRONT CAMBER ADJUSTMENT



ADJUSTING  
BOLTS

FRONT LOWER  
CONTROL ARM



**THE PROBLEM SOLVER®**

